



COPPER BUILDERS



BUILT ON TRUST



COLDWELL BANKER

SEA COAST
ADVANTAGE



2777 Alvernia Drive

HOMESITE 20 | SUNSET REACH

\$1,250,000 | 3,004 SQFT | 3 BED | 3 BATH



See Sales Counselor for Home Features



tracel@thirty4north.com



910-807-4446



SunsetReachNC.com

Pricing, incentives, and availability subject to change without notice. 11/2024

©2024 All Rights Reserved. Changes and modifications to floor plans, materials, and specifications may be made without notice. Square Footages will vary between elevations specific to plan and exterior material differences. Some items pictured or illustrated are optional and are an additional cost. Dimensions are approximate. Illustrations are artist renderings only. Home and customer-specific detailed drawings and specifications will be furnished to each customer as part of their Building Agreement. All Copper Builders® floor plans and designs are copyrighted. All rights reserved and strictly enforced.



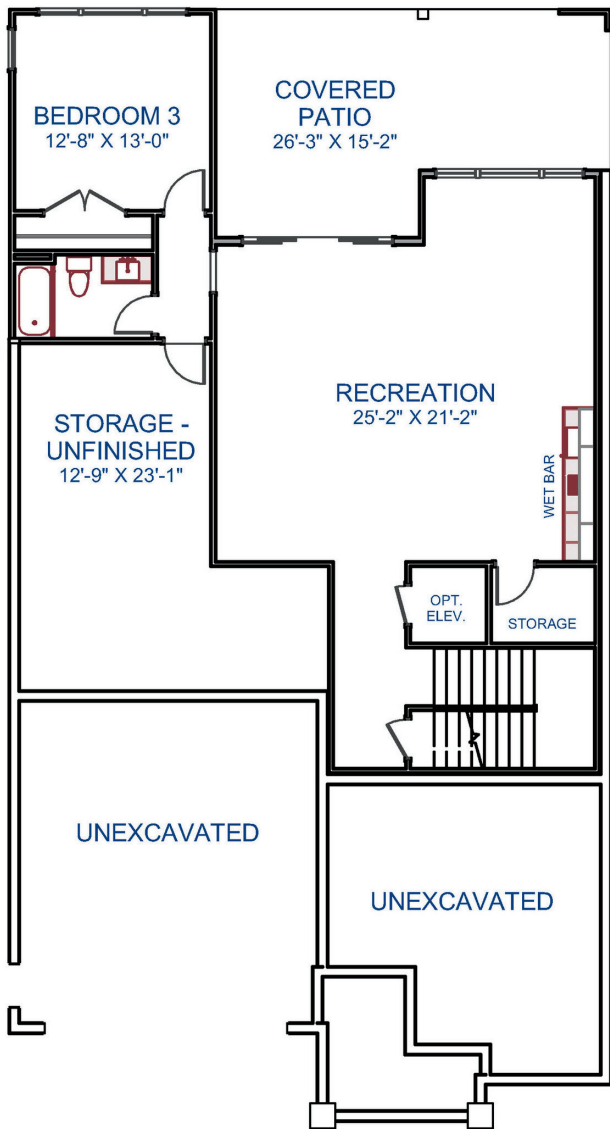
Property Features

See all details and photos!

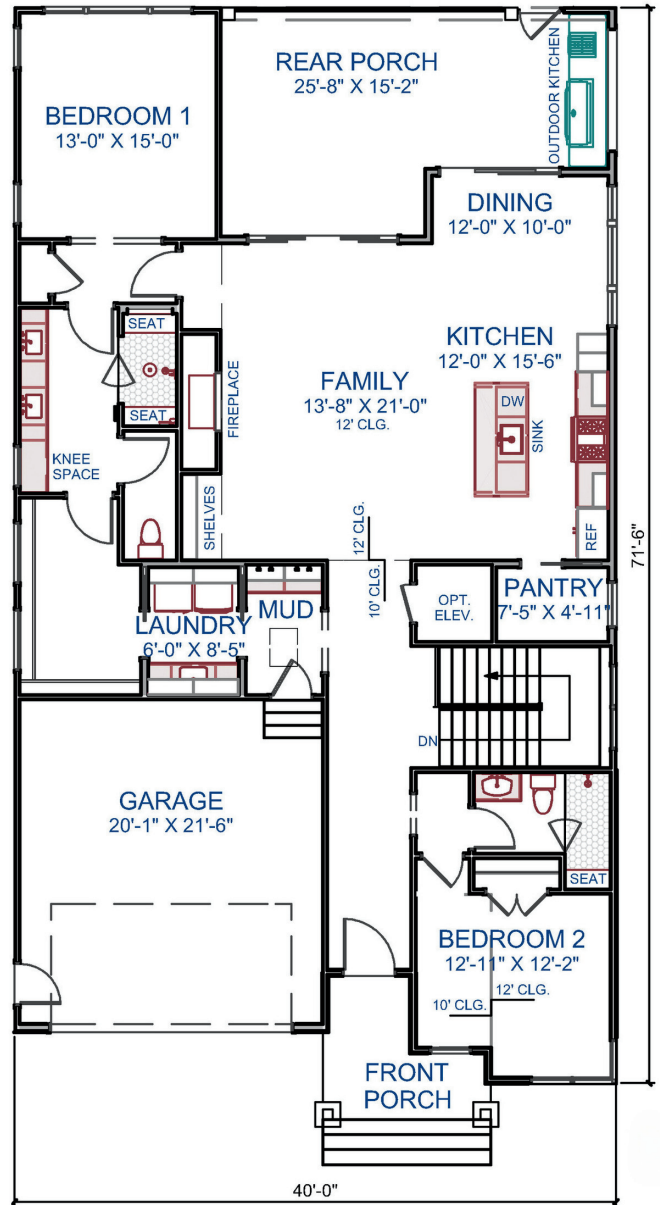


- Waterfront Home
- Walkout Basement
- Covered Patio
- Covered Porch
- Elevator
- Recreation Room
- Built-in Bar in Rec Room
- Built-In Outdoor Grill
- Main Level Office
- Main Level Primary Suite

MAIN LEVEL



BASEMENT LEVEL



tracel@thirty4north.com

910-807-4446

SunsetReachNC.com

Pricing, incentives, and availability subject to change without notice. 11/2024

©2024 All Rights Reserved. Changes and modifications to floor plans, materials, and specifications may be made without notice. Square Footages will vary between elevations specific to plan and exterior material differences. Some items pictured or illustrated are optional and are an additional cost. Dimensions are approximate. Illustrations are artist renderings only. Home and customer-specific detailed drawings and specifications will be furnished to each customer as part of their Building Agreement. All Copper Builders® floor plans and designs are copyrighted. All rights reserved and strictly enforced.

