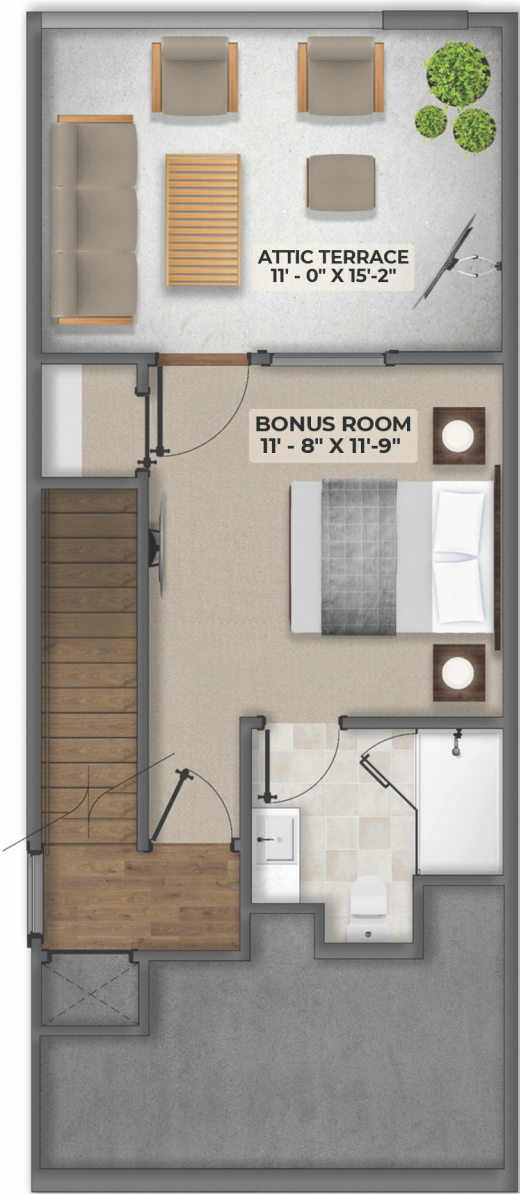


# VERBENA

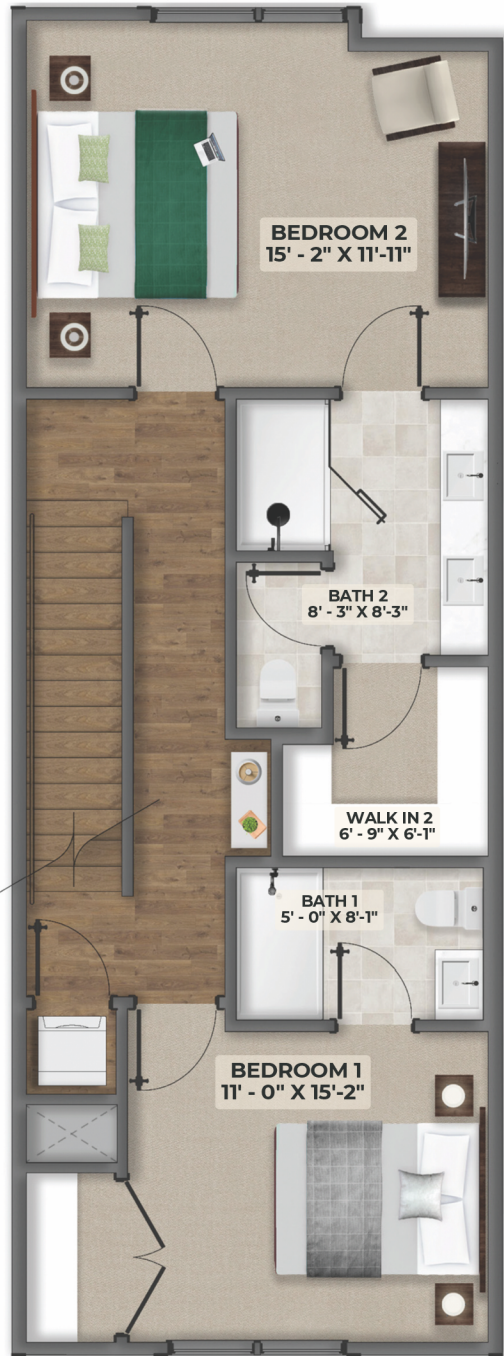
VILLAGE — LOS O

COPPER  
BUILT ON TRUST  
BUILDERS

**ATTIC / ROOF**  
309 SF HEATED | 165 SF ROOF  
TERRACE | 304 SF HABITABLE AREA



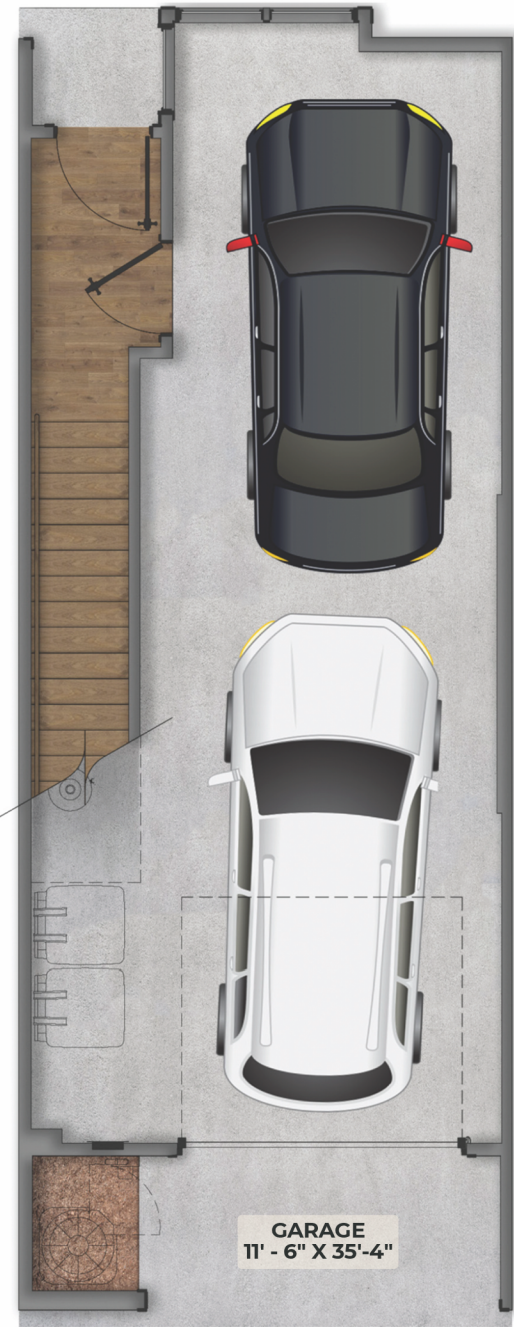
**THIRD FLOOR**  
704 SF HEATED | 614 SF HABITABLE  
AREA



**SECOND FLOOR**  
700 SF HEATED



**GROUND FLOOR**  
82 SF HEATED | 496 SF GARAGE



**END UNITS 1, 5 & 15** 1,795 SF | 3 BED | 3.5 BATH

**REACH OUT TO THE SALES TEAM  
TO LEARN MORE:**

KELSEY MCKEEVER | 704-378-8919  
BRITTNI TUDOR | 919-235-7029

©2024 All Rights Reserved. Changes and modifications to floor plans, materials, and specifications may be made without notice. Square Footages will vary between elevations specific to plan and exterior material differences. Some items pictured or illustrated are optional and are an additional cost. Dimensions are approximate. Illustrations are artist renderings only. Home and customer-specific detailed drawings and specifications will be furnished to each customer as part of their Building Agreement. All Copper Builders® floor plans and designs are copyrighted. All rights reserved and strictly enforced.

