



STONEGATE

AT ST. ANDREWS

COPPER BUILDERS

BUILT ON TRUST

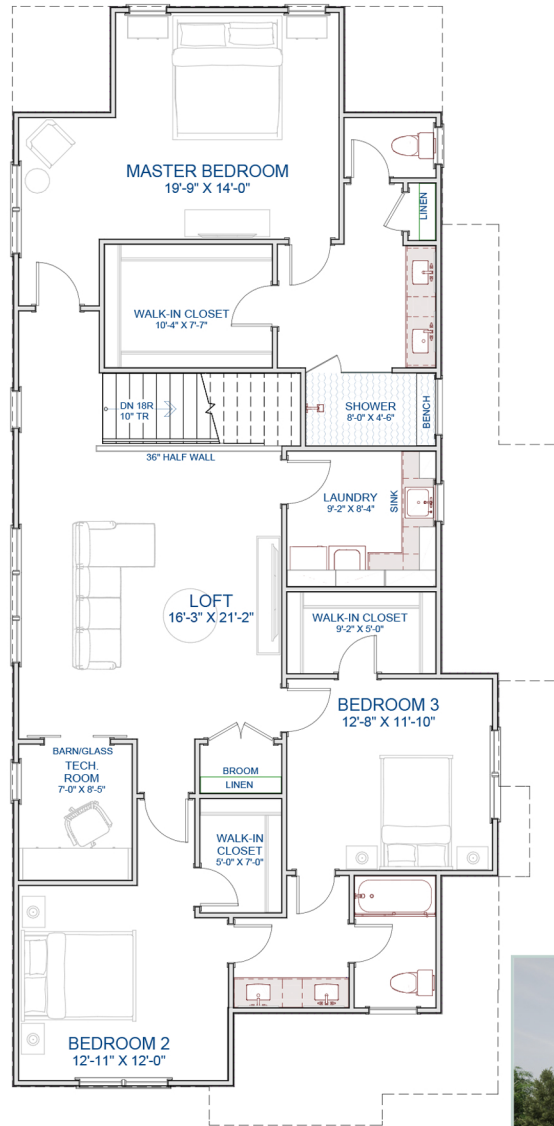
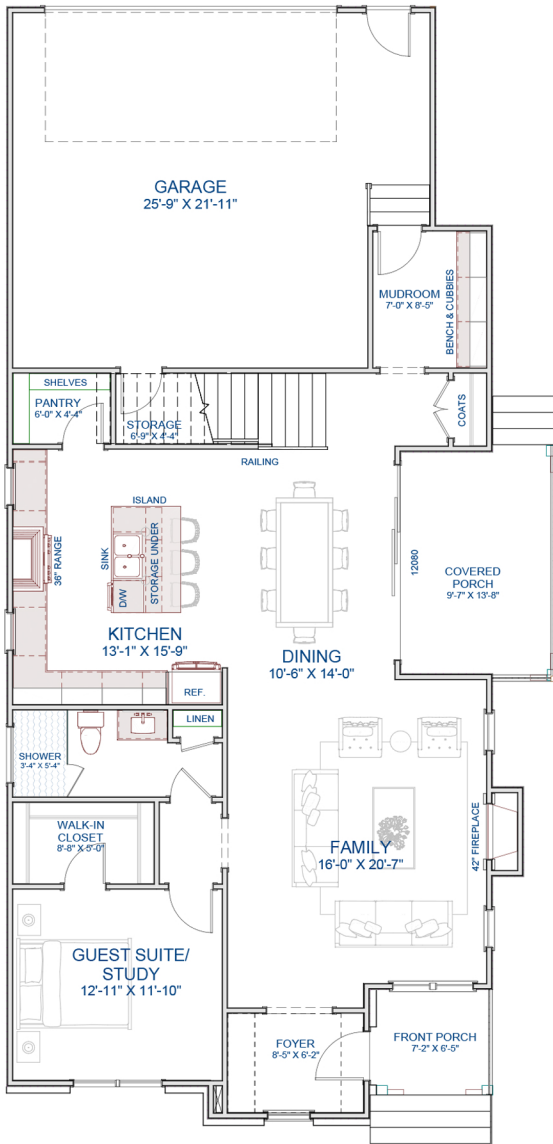
CYPRUS

PLAN FEATURES

- 2,888 sq. ft.
- 4 Bedrooms
- 3 Baths
- Width 30' / Length 68'9"
- Covered outdoor living
- First-Floor Study/Bedroom
- Second-Floor Loft



Scan to learn more about Stonegate at St. Andrews



StonegateLiving.Homes

919.845.9909

Info@JimAllen.com