



STONEGATE

AT ST. ANDREWS

COPPER BUILDERS

BUILT ON TRUST

CYPRUS

PLAN FEATURES

Lot 7 - CYPRUS

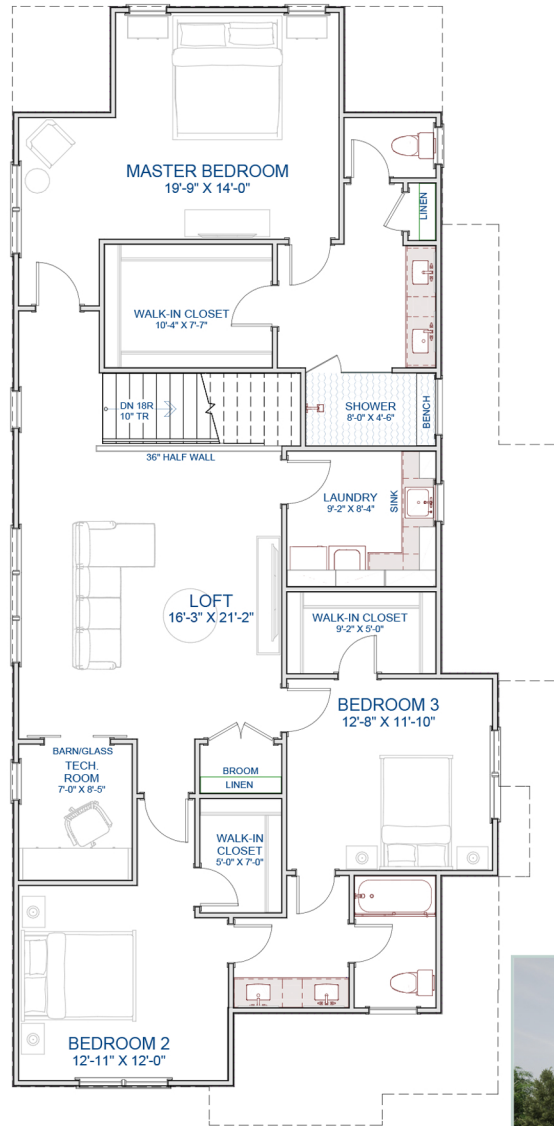
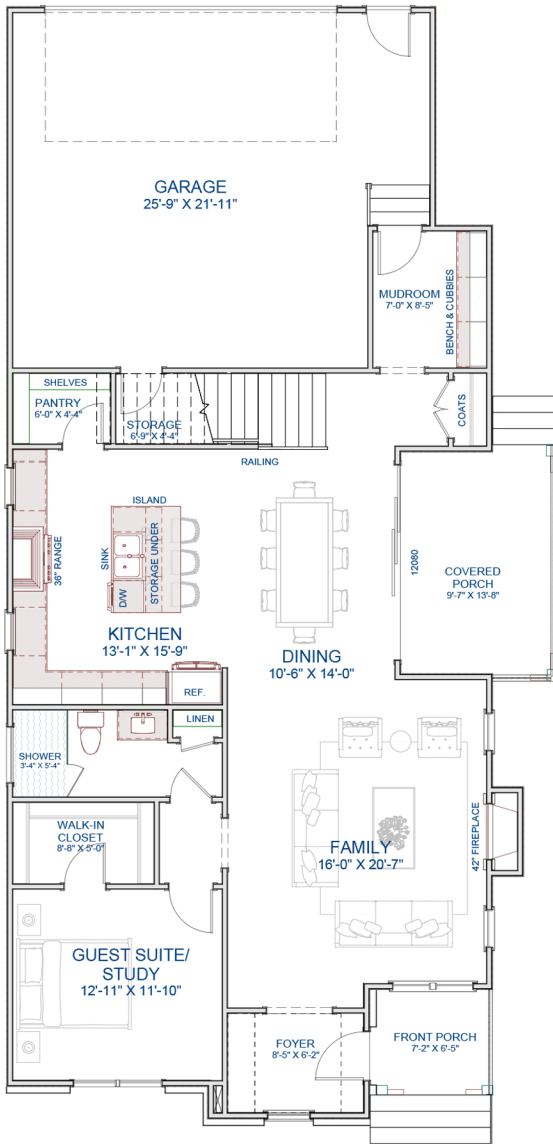
- 3812 Coach Lantern Ave.
- 2,888 sq. ft.
- \$725,000
- 4 Bedrooms
- 3 Baths
- Garage

Ready by Summer 2024

- Covered outdoor living
- First-Floor Study/Bedroom
- Second-Floor Loft



Scan to learn more about Stonegate at St. Andrews



StonegateLiving.Homes

919.845.9909

Info@JimAllen.com