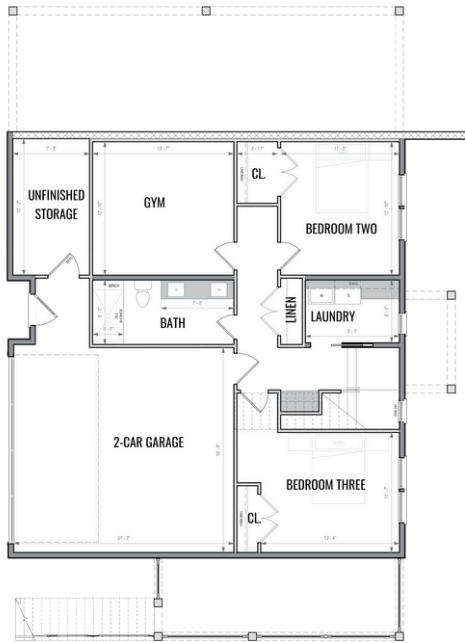
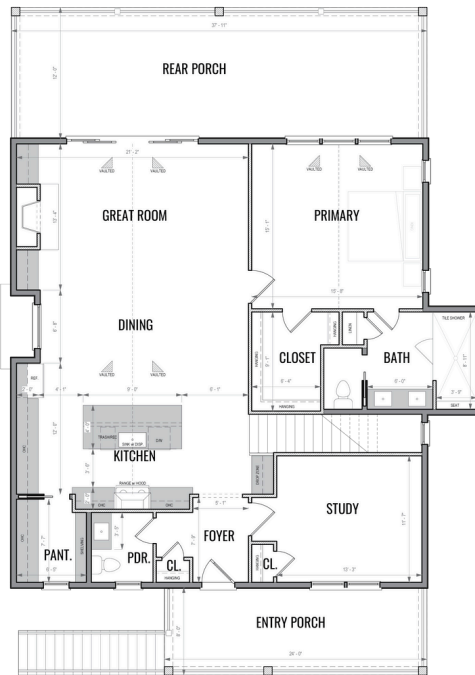




15 MAGGIES LN, ASHEVILLE, NC 28803
Estimated Completion: Spring 2025



LOWER LEVEL PLAN



UPPER LEVEL PLAN



Property Features:

- 2,468 SQFT
- 3 Bedrooms
- 2.5 Bathrooms
- Primary on Main
- 2 Car Garage
- Covered Rear Porch
- Study
- Home Gym

Plans, renderings, and elevations are visual representations only and may not reflect the actual home. Stated dimensions are approximate and should not be used as representation of the home's actual size or net useable square footage. We reserve the right to make changes to floor plans, specifications, dimensions, and materials without prior notice. Illustrations are artist renderings only.

